

# DGU 500

Double mitre saw



Product data sheet  
DGU 500  
07/22 PR10262

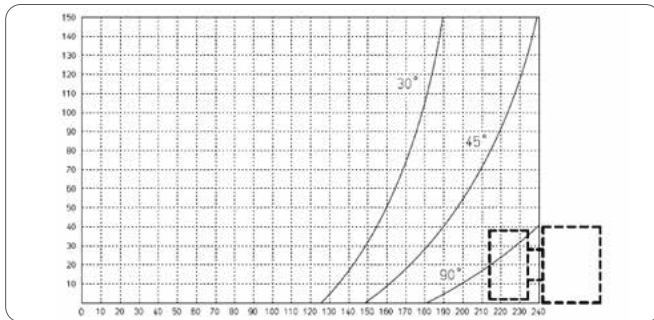
## Our know-how - your advantage

### DGU 500 Double mitre saw with saw blade $\varnothing$ 500 mm

- semi-automatic operation
- cutting length 3560 mm
- available, upon request, in length versions up to 4,5 m
- the saw is additionally provided with an intermediate support for long workpieces (2 x at 4500 mm)
- right head manually adjustable
- both heads can be manually adjusted by  $45^\circ$  to the outside and by  $30^\circ$  to the inside
- two-hand operation
- digital measuring display (as standard) with fine adjustment (see picture)
- the saw is equipped with two vertical and two horizontal clamps
- stop for short pieces

#### Options

- cutting length 4560 mm
- aluminium package with hydropneumatic feed and spraying device



### Technical information



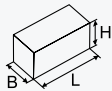
760 kgs



2 x 2,8 kW  
2800 1/min



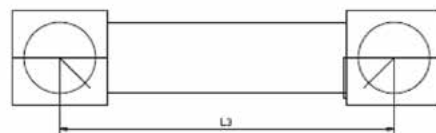
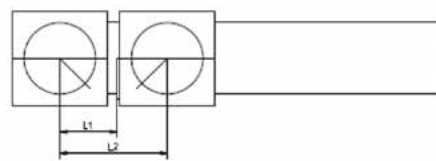
230 - 400 V  
L1-L2-L3-N-PE  
50 - 60 Hz



L = 3800 mm  
B = 900 mm  
H = 1400 mm



6 bar



L1 = 260 mm  
L2 = 560 mm  
L3/3,5 = 3560 mm  
L3/4,5 = 4560 mm

Technical data are valid for basic machine without options. Size according to layout.

#### Urban GmbH & Co. Maschinenbau KG

Dornierstraße 5  
DE - 87700 Memmingen  
Tel.: +49 (0) 8331 858 - 0  
E-Mail: urban@u-r-b-a-n.com  
www.u-r-b-a-n.com

Subject to errors and modifications